



**REGIONAL SPECIALISED METEOROLOGICAL CENTRE-TROPICAL CYCLONES, NEW DELHI
TROPICAL WEATHER OUTLOOK**

DEMS-RSMC SPECIAL TROPICAL CYCLONES NEW DELHI DATED 07.07.2022

TROPICAL WEATHER OUTLOOK FOR NORTH INDIAN OCEAN (THE BAY OF BENGAL AND ARABIAN SEA) VALID FOR NEXT 120 HOURS ISSUED AT 0600 UTC OF 07.07.2022 BASED ON 0300 UTC OF 07.07.2022.

BAY OF BENGAL:

A CYCLONIC CIRCULATION LIES OVER NORTHWEST & ADJOINING WESTCENTRAL BAY OF BENGAL OFF SOUTH ODISHA- NORTH ANDHRA PRADESH COASTS AT 0300 UTC OF TODAY, THE 7TH JULY, 2022.

SCATTERED LOW AND MEDIUM CLOUDS WITH EMBEDDED INTENSE TO VERY INTENSE CONVECTION OVER WESTCENTRAL BAY OF BENGAL, SOUTH BAY OF BENGAL & NORTH ANDAMAN SEA AND MODERATE TO INTENSE CONVECTION OVER REST OF BAY OF BENGAL, SOUTH ANDAMAN SEA, ARAKAN COAST & TENASSERIM COAST.

PROBABILITY OF CYCLOGENESIS (FORMATION OF DEPRESSION) DURING NEXT 120 HRS:

24 HOURS	24-48 HOURS	48-72 HOURS	72-96 HOURS	96-120 HOURS
NIL	NIL	NIL	NIL	NIL

ARABIAN SEA:

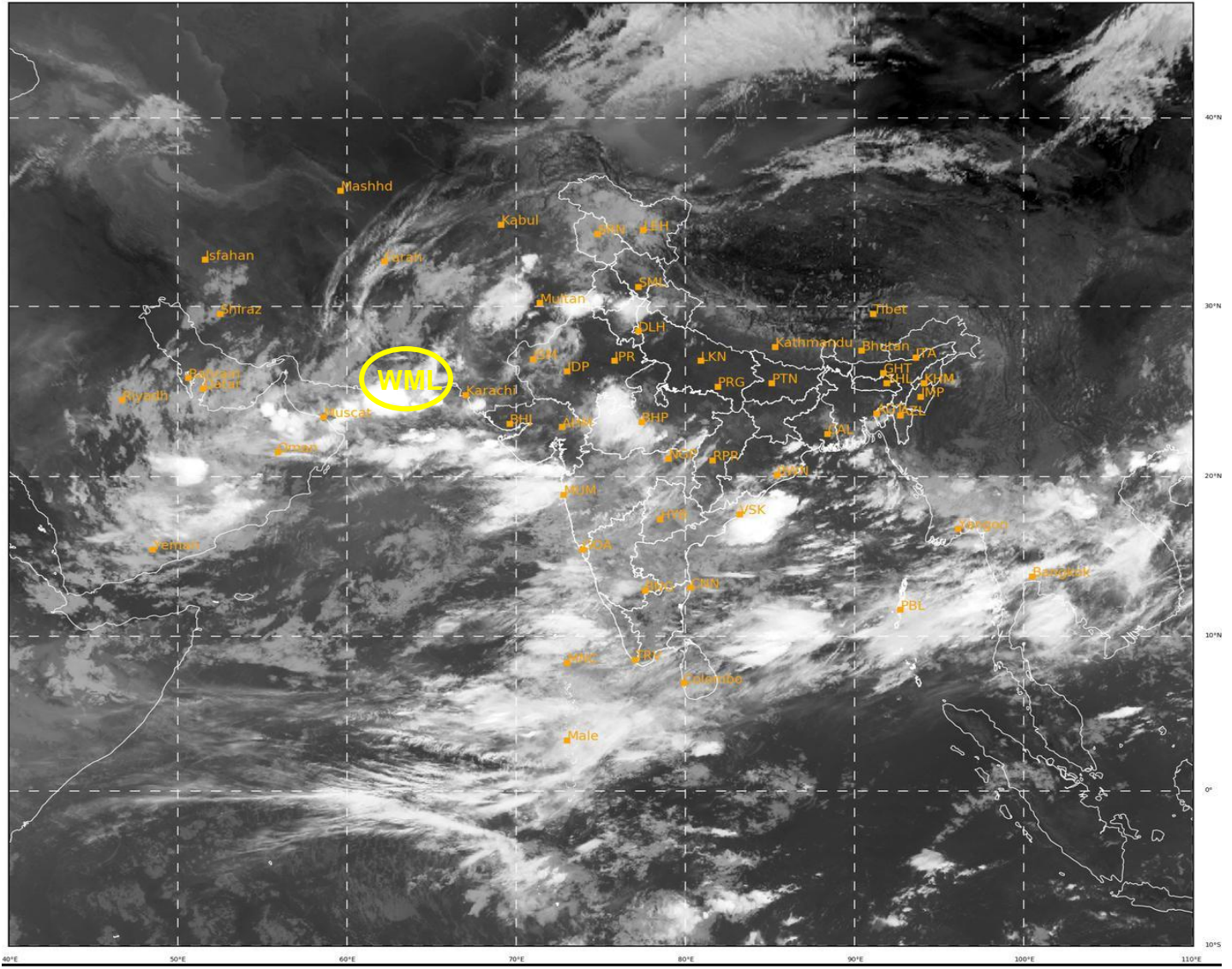
YESTERDAYS, LOW PRESSURE AREA OVER KUTCH & NEIGHBOURHOOD EMERGED INTO NORTHEAST ARABIAN SEA AND ADJOINING COASTAL AREAS OF KUTCH AND SOUTH PAKISTAN AT 1200 UTC OF YESTERDAY, THE 06TH JULY, 2022. IT LAY OVER SOUTH PAKISTAN & NEIGHBOURHOOD AT 0000 UTC OF TODAY THE, 07TH JULY, 2022 AND INTENSIFIED INTO A WELL MARKED LOW PRESSURE AREA LAY OVER THE SAME REGION AT 0300 UTC OF TODAY.

SCATTERED LOW AND MEDIUM CLOUDS WITH EMBEDDED INTENSE TO VERY INTENSE CONVECTION OVER NORTH ARABIAN SEA AND ADJOINING SOUTH PAKISTAN. SCATTERED LOW AND MEDIUM CLOUDS WITH EMBEDDED MODERATE TO INTENSE CONVECTION OVER EASTCENTRAL & SOUTHEAST ARABIAN SEA, LAKSHADWEEP ISLANDS, COMORIN & MALDIVES AREA, AND WEAK TO MODERATE CONVECTION OVER REST PARTS OF ARABIAN SEA, PALK STRAIT AND SRI LANKA.

PROBABILITY OF CYCLOGENESIS (FORMATION OF DEPRESSION) DURING NEXT 120 HRS:

24 HOURS	24-48 HOURS	48-72 HOURS	72-96 HOURS	96-120 HOURS
NIL	NIL	NIL	NIL	NIL

REMARKS: NIL



377

932

IMD, DELHI

- WML STANDS FOR WELL MARKED LOW PRESSURE AREA

Cloud distribution: (a) Isolated: <25%, Scattered:25-50%, Broken: 51-75%, Solid:>75%, Convection Intensity: (a) Weak: Cloud Top Temperature (CTT) >-25°C, (b) Moderate: CTT: - 25°C to -40°C, (c) Intense: CTT: - 41°C to -70°C and (d) Very Intense: : Less than -70°C
PROBABILITY OF CYCLOGENESIS (FORMATION OF DEPRESSION): NIL: 0%, LOW: 1-33%, , MODERATE: 34-66% AND HIGH: 67-100%
This is a guidance Bulletin for WMO/ESCAP Panel Member countries. Visit respective National websites for Country specific Bulletins